

ALN(W)-24-□/□ Silicon rubber cold-shrinkable termination

1. Brief introduction

1.1 AMPLE silicon rubber cold-shrinkable outdoor and indoor termination rated current is 630A, rated voltage is 24KV

1.2 Apply to 12/20kV XLPE cable, and cable cross section is 35-400mm².

2. Working environment

Ambient temperature: -40°C~+60°C, long time working temperature, over-loaded and short circuit temperature all shall meet the requirement of the matched XLPE cable.

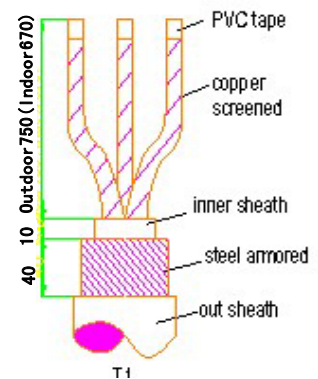
3. Product structure

The product is a special cold-shrink rubber injection molding, anti-tracking and strong corrosion resistance, excellent electrical properties, easy and reliable installation, wide application.

Installation instruction

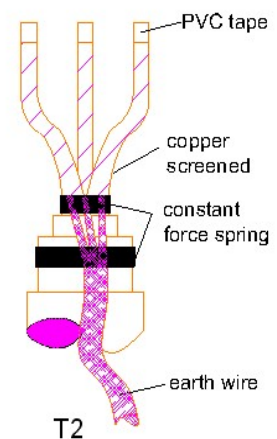
1. Stripping the outer sheath, steel armor and inner sheath.

1.1 (Fig.1) Stripping the outer sheath 900mm of the outdoor termination (800mm for the indoor termination), keep 40mm of the steel armor, fastened it with plastic strip and polished; keep 10mm of the inner sheath, wrapped the end of copper screened layer and steel armor in each phase with PVC tape, then remove the filler and tie bar.



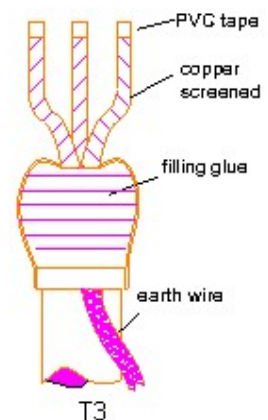
2. Fix the earthing wire and wrap the filling glue.

2.1 (Fig.2,3) Fix one end of earth wire on the three-phase copper screened with a constant force spring (try to near the end part). And fix the earthing wire on the steel armour with another constant force spring, then wrap enough filling glue. Wrap the constant force spring, trigeminal portion and steel armour on the 30mm end of the outer sheath together, then wrap a layer of PVC tape on the outside. If use two earthing wires, copper screened layer use the bigger earthing wire and the steel armour use smaller earthing wire to fix. (Ensure the earthing wire grounded, shall keep length 20mm, and use the constant force spring to wrap around one circle, and reflexed back, wrapped again with the spring, but the two earthing wires shall be insulated).



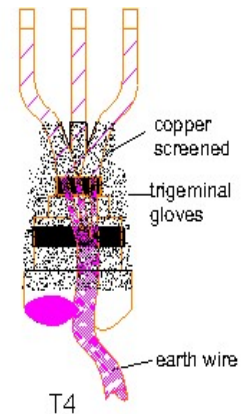
3. Install the cold-shrink trigeminal tube

3.1 (Fig.4) Put the cold-shrinkable trigeminal tube into the trigeminal root, clean the surface of outer sheath at the bigger end, then wrap a layer of sealant and clamp the earthing wire, remove the plastic supporting bar and make the trigeminal tube shrink and encase the sealant. And then wrap the bigger end with the self-stick insulating tape and PVC tape.



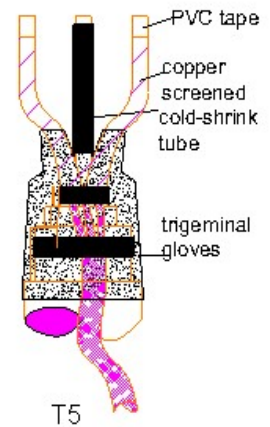
4. Install cold-shrink insulating tube

4.1 (fig.5) Set the insulating tube into three-phase cable core, firstly make the insulating tube shrink to finger root of the trigeminal tube, then remove the plastic supporting bar to make the cold-shrink tube shrink.



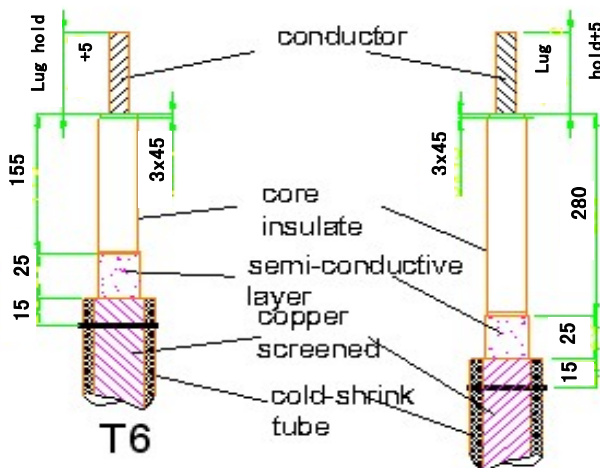
5. Striping each phase cable core

5.1 (fig.6) Indoor termination as the left figure stripping each phase cable core while the outdoor termination as the right figure. Make and cut the core in circumcission way without any slags, and longitudinal way prohibited. Stripping the copper screened without any burr, and do not damage the semi-conductive layer. 1. Do not damage the surface of core insulation when stripping cables. Make port leveled and do 3mm width inclined plane. Make the port vertical when cut core insulation, and do 1*45° chamfering. When all the stripping finished, wrap each cable core end with PVC tape to protect it, then clean the surface of core insulation and the other parts, daub lubricant silicone on the surface.

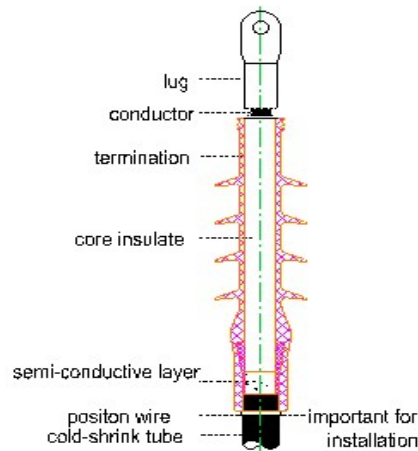


6. Install the cold-shrink termination

6.1 (fig.6) Downwards the semi-conductive layer, measure and mark the installation positioning line on the cold-shrink insulating tube. Each take 45mm length outdoor and indoor termination, and set the cold-shrink termination into cable core, aligned its end port with the installation positioning line and shrinkable.



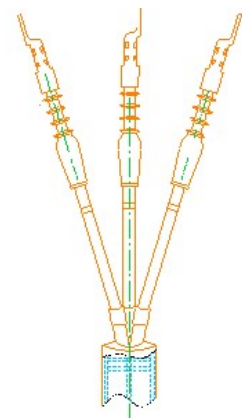
T6.1



T6.2

7. cable lug and install the color phase tape

7.1 (fig.7) Remove the PVC tape of the three phase wire core, set the cable lug into cable core, and tightened it with clamp. Wrap the end port of the cable lug with self-stick tape and PVC tape. Finally use phase tape to wrap the termination end port and mark the phase sequence of the cable core, then finish the termination installation.



T7
finished visual for termination