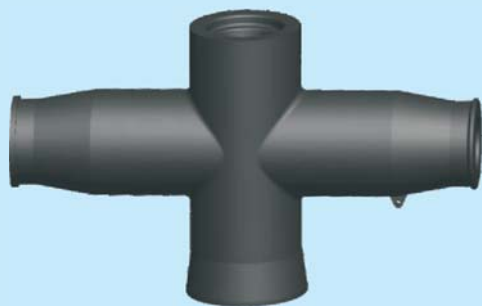




Type.: AFTG-35-□  
F Bushing



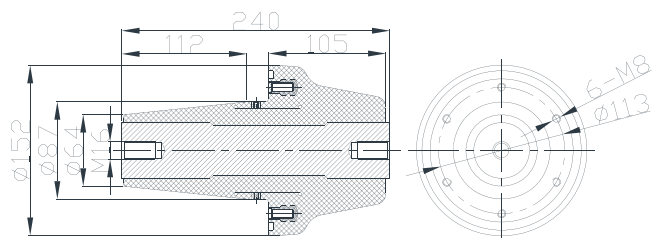
Type: AFD-35-□  
35kV F Bus-bar connector



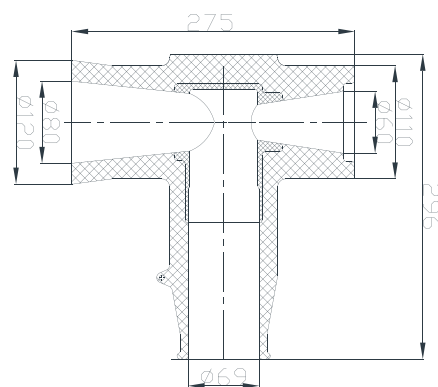
Type: AFS-35-□  
35kV F Crossing connector

## ● 35kV F Busbar system

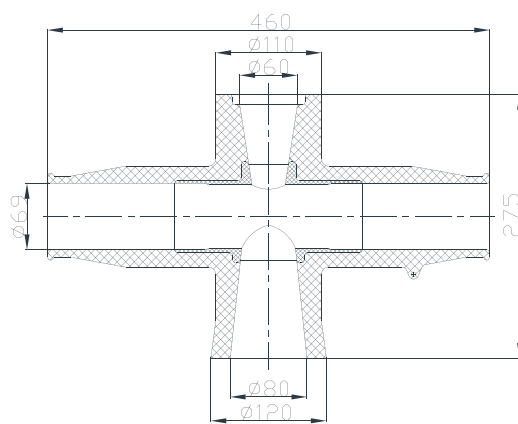
1. Suitable for the busbar connecting between 35kV GIS system switchgears.
2. The minimum center distance is 500mm.
3. The contact spring with high conductive beryllium bronze can meet the current 1250A, 2000A, 2500A.
4. F Busbar system adopt the Bolt crimping structure.



F Bushing



35kV F Bus-bar connector



35kV F Crossing connector





35kV/630A Epoxy bushing



35(40.5)kV Front connector  
AQT3-35(40.5)/630KC



35(40.5)kV Rear connector  
AHT3-35(40.5)/630KC



35(40.5)kV Rear connector w/arrester  
AHY5WZ3-51/134(127)

## 35(40.5)kV Screened Front & Rear connector

1. Suitable for the high voltage electrical apparatus of power plant, power transformer station at or under 40.5kV, such as cable branch box, combination transformer and incoming / outgoing line of GIS system.
2. Fully insulated, fully sealed and fully screened.
3. Adopt advance back injecting technology, the electric performance reach the international leading level.
4. More safe and reliable.
5. Little effect by bad weather to mounting condition.
6. Coagulation dew resistant and contaminate proof, free of maintenance.
7. The stress settled with high partial discharge level adopted German technology.
8. The small dimension sufficiently meets the mounting space requirement.
9. Leading provision cable connector in the world.
10. The conductor cross section is 50-630mm<sup>2</sup>.
11. IEC suitable for size  $\phi 46 / \phi 56 / 91.5$  mm bushing.

## 35(40.5)kV Rear connector w/arrester

Performance parameters of connector w/arrester

Rated voltage : 51kV

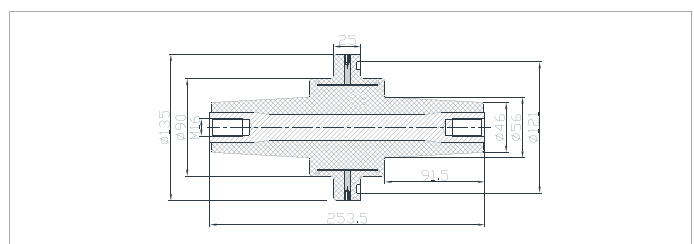
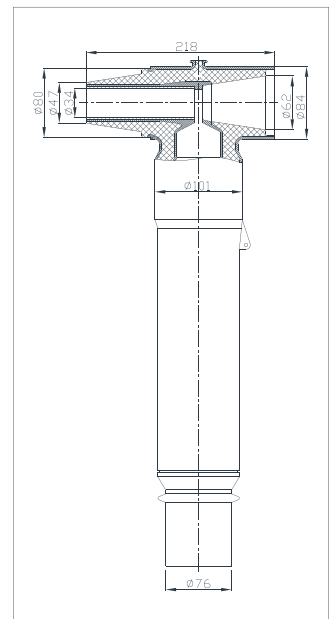
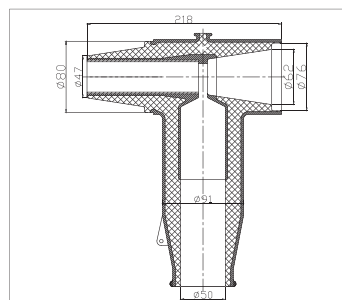
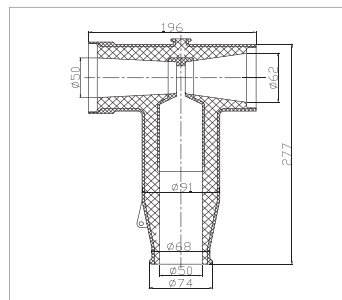
Continuous operating voltage: 40.8kV

5kA Lightning impulse current residual voltage :134kV

At D.C. 1mA voltage  $U_{mA} \geq 73kV$

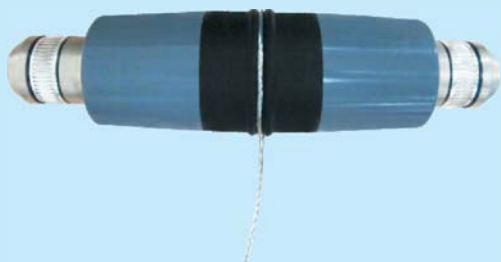
Leaking current at D.C.  $0.75mA \leq 50\mu A$

2ms rectangular current withstand 400A





Type: CM-35  
Screened Over-voltage protection  
surge arrester



Type : AML-35-2#  
12-35kV 1250A Busbar connector

## Screened Over-voltage protection surge arrester

- 1.The most advanced in the world.
- 2.Suitable for at or under 35kV GIS Fully-sealed combination electrics.
- 3.With the performance characteristics of metal oxide surge arresters.
- 4.Adopt fully sealed metal shell, touchable, anti-electric shock, safe use.
- 5.Solid insulated plug-in type assembly, easy use.
- 6.Excellent organic insulated materials, High Dielectric strength.

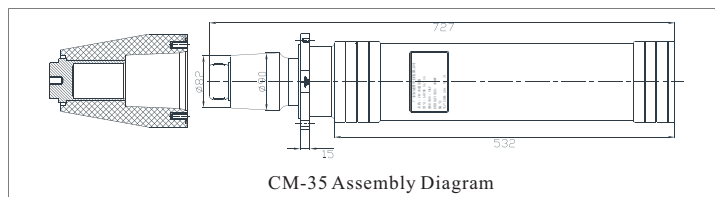


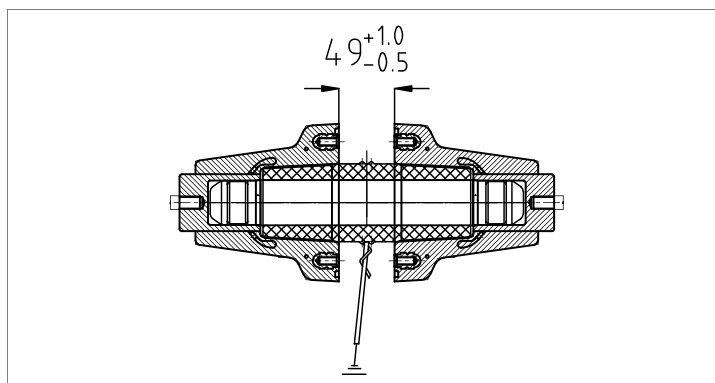
Fig. A

## Performance parameters

Type		CM-35
System nominal voltage	kV(r.m.s)	35
Rated voltage	kV(r.m.s)	51
Continuous operation voltage	kV(r.m.s)	40.5
At D. C. 1mA voltage U <sub>1mA</sub>	≥kV	73
Lightning impulse current residual voltage ≤kV	steep	154
	Lightning	134
	Operating	114
2ms Rectangular current withstand	A	400 (600)
4/10us High current impulse withstand	kA	65
Fig. No.		Fig. A

## 12-35kV 1250A Busbar connector

- 1.Apply to the cabinet connection of 12-35kV 1250A RMU.
- 2.Adopt the 35kV 2# Inner cone socket.
- 3.Meet for the 1250A current requirements.

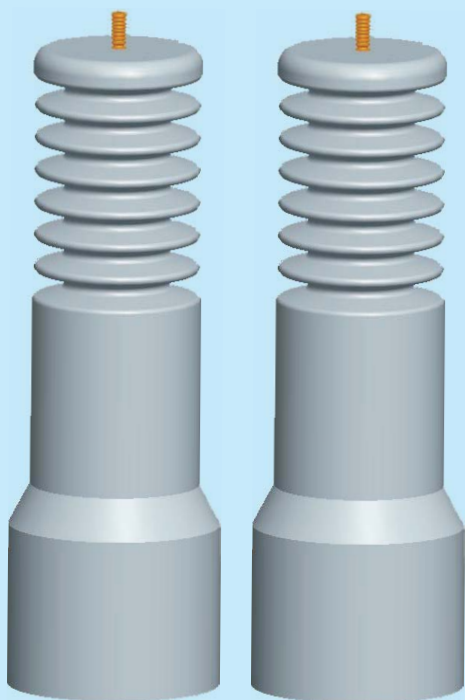




Type: APCT-2  
35kV Current Test Device2#



Type: APCT-3  
35kV Current Test Device3#

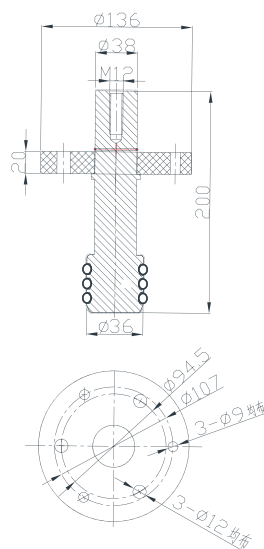


Type: APVT-2  
35kV Voltage Test  
Socket 2#

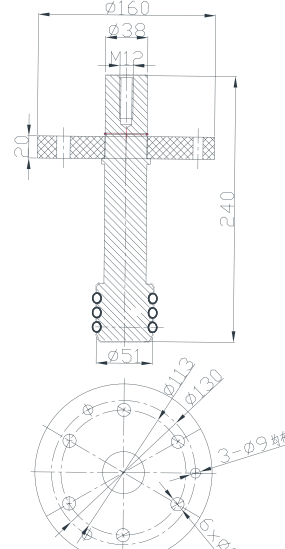
Type: APVT-3  
35kV Voltage Test  
Socket 3#

## 35kV Current Test Device

Suitable for Large Current Test of apparatus with inner cone socket, such as gas insulated switch and transformer etc. Put the product into the homologous socket and the test wire connect to the bolt of the product when do the test.



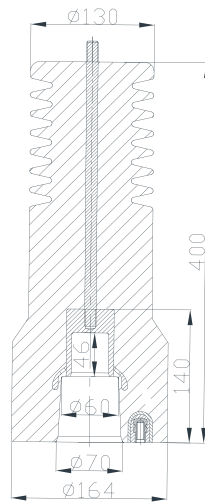
35kV Current Test Device 2#



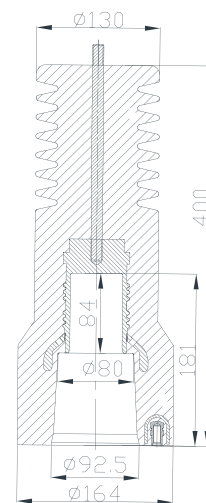
35kV Current Test Device 3#

## 35kV Voltage Test Socket

Apply to electrical test for the cable with Inner cone Plug-in termination.



35kV Voltage Test Socket 2#



35kV Voltage Test Socket 3#



Type: APCV-3  
35kV Energized Protection cap



Type: APC-3  
35kV Non-energized protection cap



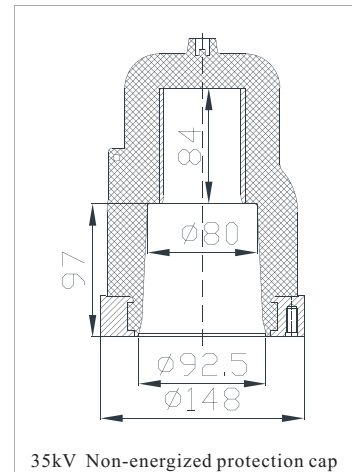
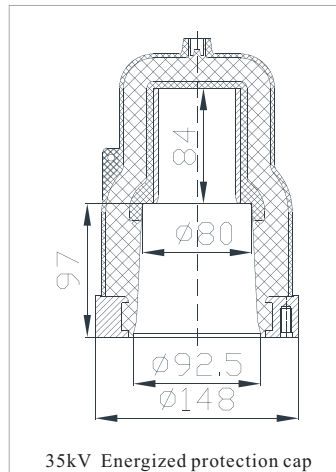
Type: AWSY35-□  
35kV Test cable

## ● 35kV Energized Protection cap

35kV Energized protection cap protects the energized inner cone plug-in termination against electric shock. It also can be used for the withstand voltage test of test cable.

## ● 35kV Non-energized Protection cap

1. It provides dustproof and moistureproof protection for inner cone plug-in termination .
2. It can't withstand the voltage.



## ● 35kV Test Cable

Suitable for Electric Performance Test of apparatus with inner cone socket, such as gas insulated switch and transformer etc. and can be used repeatedly.

Standard : GB/T12706.4-2002 IEC 60502-4

Technical parameters:

Power frequency withstand voltage: 117kV/5mins

Partial discharge : 45kV<10pC